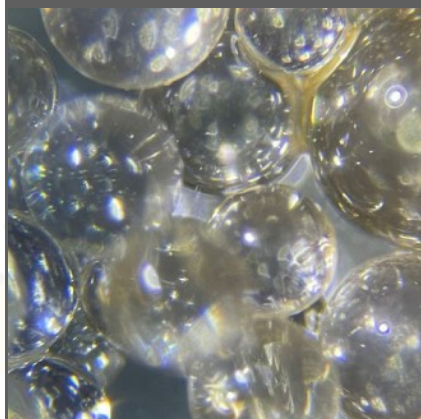


# Felite™ Resin

## FMB402



SAC / SBA, Gel

Ratio: 1 : 1

Standard Mesh Size

H<sup>+</sup> / OH<sup>-</sup> form

Felite™ FMB402 is the mixture of Felite™ FC108-MH (Mono polymerized, hydrogen form strong acid cation resin) and Felite™ FA124-MOH (Mono Polymerized, hydroxide form type I strong base anion resin) with the ratio 1:1.

Felite™ FMB402 is designed to produce high water quality and is intended to use in general mixed bed deionization applications that require high resistivity and high capacity, such as EDM operations and spotless rinsing. It's supplied ready to use form, and the resistivity can reach up to 10+ megohms.

### Applications:

- EDM (Electric Discharge Machining);
- Window Washing; Solar Panel Washing;
- Car Washing; RV Washing;

### TYPICAL PHYSICAL & CHEMICAL CHARACTERISTICS:

<b>Polymer Structure</b>		Styrene/DVB, Gel
<b>Appearance</b>		Spherical Beads
<b>Functional Group</b>	Sulfonic Acid	Quaternary Amine, Type I
<b>Ionic form, as shipped</b>	99% H <sup>+</sup>	90% OH <sup>-</sup>
<b>Total Capacity (mmol/ml)</b>	2.0 min. (Na <sup>+</sup> )	1.3 min. (Cl <sup>-</sup> )
<b>Ratio</b>	1 : 1	
<b>Moisture Retention</b>	50 -60%	
<b>Particle Size Range (mm)</b>	0.3 - 1.2 (≤0.3mm, 1% max.; > 1.2mm, 5% max.)	
<b>Uniformity Coefficient (max.)</b>	1.7	
<b>Shipping Weight (g/L, approx.)</b>	700 - 740 (43 lb/ft <sup>3</sup> )	
<b>Temperature Limit</b> (Regenerable Bed)	60°C (140°F)	
<b>Temperature Limit</b> (Non-Regenerable Bed)	100°C (212°F)	
<b>Stability, pH Range</b>	0 - 14	

### PACKAGING:



25 Litres / 1 cu.ft PE Bag;  
48 / 42 Bags Per Pallet;  
20 Pallets Per 20ft Container



#### Asia Pacific

Yancheng, Jiangsu, China  
[sales@felitecn.com](mailto:sales@felitecn.com)

#### America

San Gabriel, CA, USA  
[sales@felitecn.com](mailto:sales@felitecn.com)

#### Europe

Cluj Napoca, Romania  
[sales@felitecn.com](mailto:sales@felitecn.com)

PERFORMANCE

Operating capacity

The following formula gives an approximate determination of volume that can be treated:

BV = 500 / TDS

BV (Bed Volume) is the number of litres of a water containing a TDS (Total Dissolved Solids) given in meq/L that can be demineralised with one litre of the resin mixture when run to exhaustion.

Regeneration

If required, Felite™ FMB402 resin can be regenerated after exhaustion. Both components must be separated by backwashing and regenerated separately.

LIMITS OF USE

Felite™ FMB402 resin is suitable for industrial uses. For all other specific applications such as pharmaceutical, food processing or potable water applications, it is recommended that all potential users seek advice from Felite™ Resin Technology in order to determine the best resin choice and optimum operating conditions.

TREATED WATER CONDUCTIVITY

In polishing applications, say with a feed of less than 10 µS/cm, the resins Felite™ FMB402 resin should produce a water with less than 0.1 µS/cm. In cases where the feed water has high conductivity (up to say 500 µS/cm) the water should still have less than 1 µS/cm.

SUGGESTED OPERATING CONDITIONS:

Minimum Bed Depth	700mm
Service Flow Rate	20 - 40 BV*/h
Regeneration	
- Regenerants	Cation component: HCl / H <sub>2</sub> SO <sub>4</sub> Anion component: NaOH

The statements, technical information and recommendations contained herein are believed to be accurate as of the date hereof. Since the conditions and methods of use of the product and of the information referred to herein are beyond our control, Felite™ expressly disclaims any and all liability as to any results obtained or arising from any use of the product or reliance on such information.